

MONTHLY MEMBERSHIP PROGRESS REPORT

LOCATION ENGLAND

District 105CN

Results as of: 5/31/2023

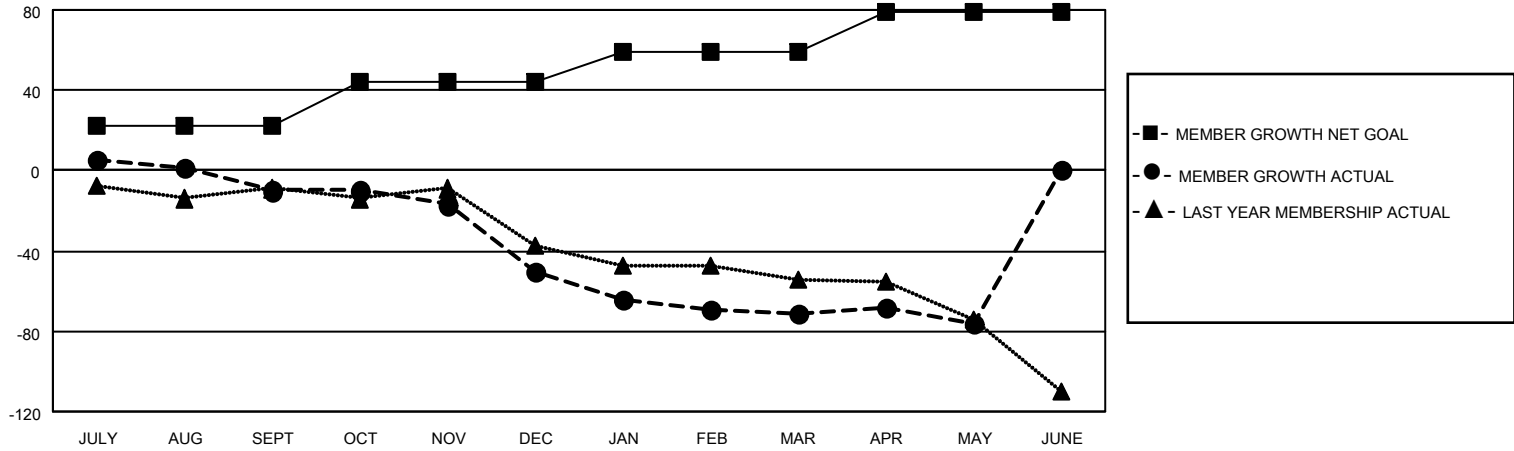
Clubs			
RESULTS FOR 2022-2023			
QUARTER	NEW CLUB GOAL	NEW CLUBS	DROPPED CLUBS
JULY/AUG/SEPT	0	0	1
OCT/NOV/DEC	0	0	1
JAN/FEB/MAR	0	0	4
APR/MAY/JUNE	1	0	0

Members			
RESULTS FOR 2022-2023			
QUARTER	MEMBER GROWTH NET GOAL	MEMBER GROWTH ACTUAL	DROPPED MEMBERS ACTUAL (including transfers)
JULY/AUG/SEPT	22	28	31
OCT/NOV/DEC	22	28	62
JAN/FEB/MAR	15	20	35
APR/MAY/JUNE	20	14	17

GOALS AND ACTUAL NEW CLUBS CUMULATIVE



GOALS AND ACTUAL MEMBERS CUMULATIVE



DROPPED CLUBS: 6	
DROPPED MEMBERS	
DECEASED	20
CLUB CANCELLED	0
OTHER	125
TOTAL	145

35 CLUBS OF 89 ADDED 1 OR MORE NEW MEMBERS

[CLICK HERE FOR CUMULATIVE MEMBERSHIP DATA](#)

<u>GENDER DISTRIBUTION</u>	
MALE	780 (67.13%)
FEMALE	382 (32.87%)
NON BINARY	0 (0.00%)
PREFER NOT TO ANSWER	0 (0.00%)
TOTAL FAMILY UNIT MEMBERS	210
FAMILY MEMBERS PAYING HALF DUES	108